

2912 Auburn Blvd. Sacramento, CA 95821 For Lease or Sale



Owner User or Development Opportunity

- 47 Room Motel with closed restaurant
- The Well Come Inn
- Generous outdoor play area
- Zoning: SPA Use Code Motel

- Parcel Size 1.95+/- acres or 84,942 SQ FT
- APN: no. 254-0060-018
- Excellent Capital City Freeway visibility

Jim Sullivan

Phone: 916-361-8500

Cell: 916-730-6200

sullivangroupe@aol.com

DRE Lic. 01883524

Sullivan Group Commercial Real Estate

6720 Folsom Blvd., Suite 208

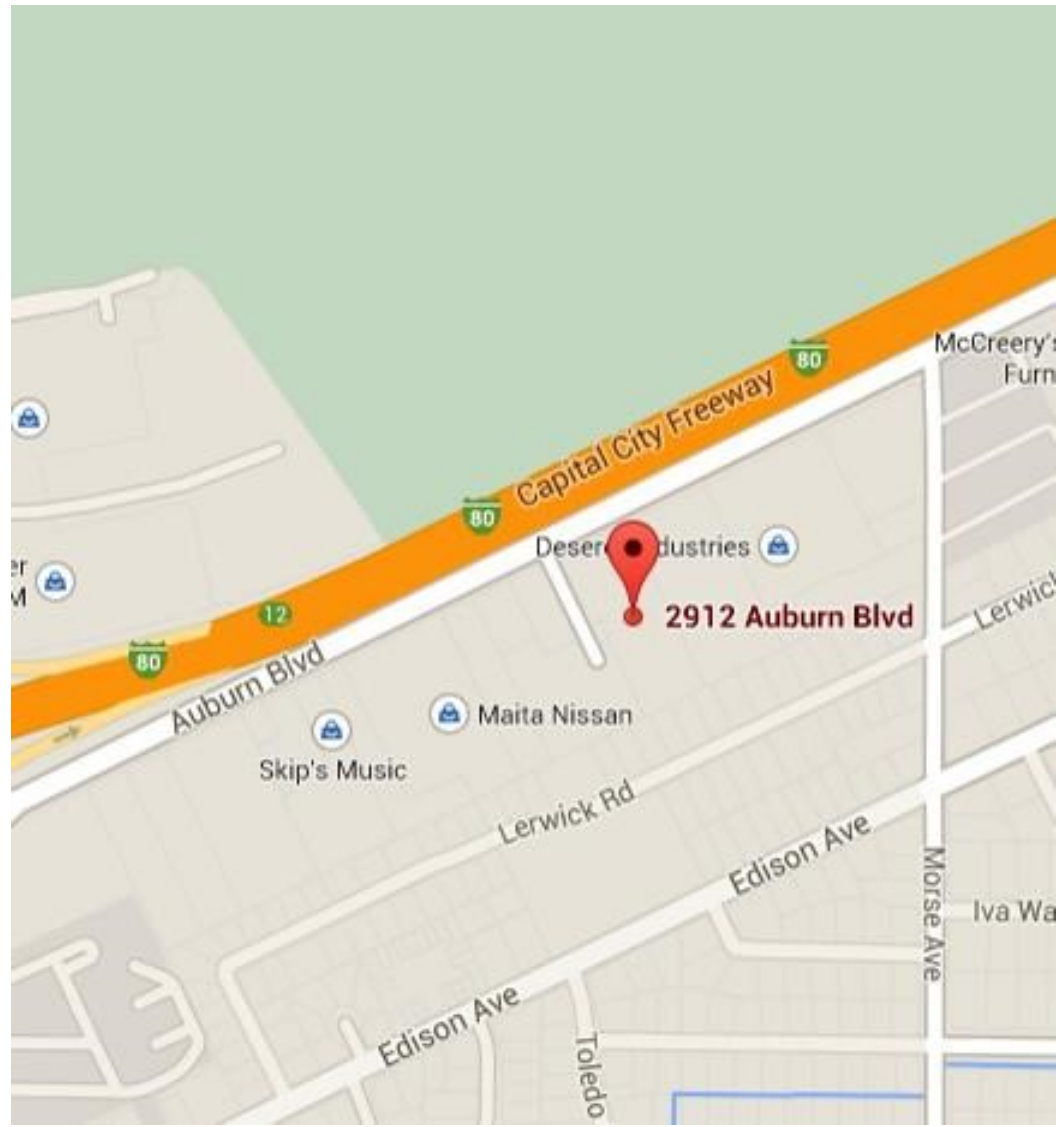
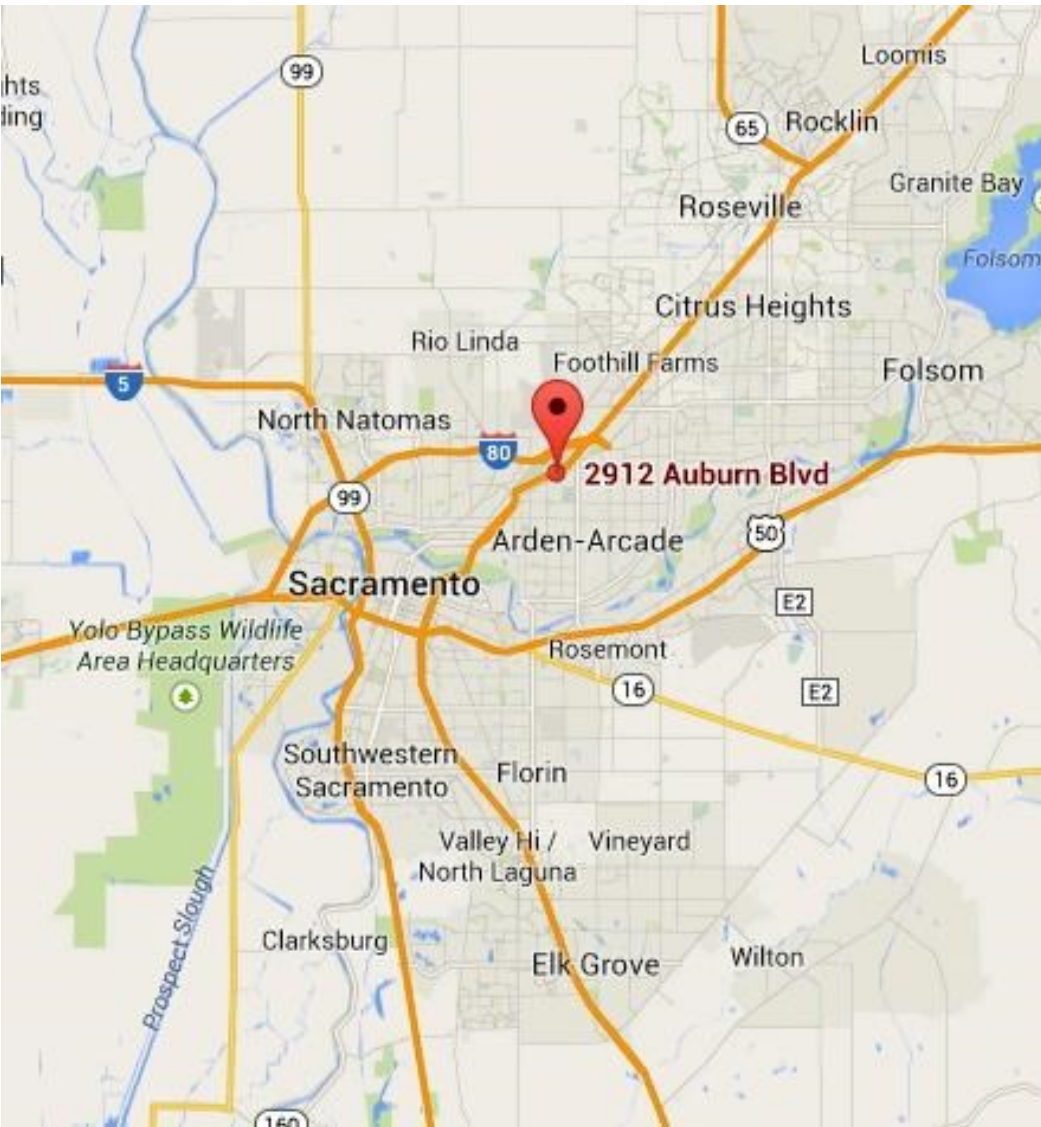
Sacramento, CA 95819

Phone: 916-361-8500 Fax: 916-361-8900

www.sullivangroupe.com



2912 Auburn Blvd. Sacramento, CA 95821 For Lease or Sale



Jim Sullivan

Phone: 916-361-8500

Cell: 916-730-6200

sullivangroupe@aol.com

DRE Lic. 01883524

Sullivan Group Commercial Real Estate

6720 Folsom Blvd., Suite 208

Sacramento, CA 95819

Phone: 916-361-8500 Fax: 916-361-8900

www.sullivangroupe.com



2912 Auburn Blvd. Sacramento, CA 95821 For Lease or Sale



Jim Sullivan

Phone: 916-361-8500

Cell: 916-730-6200

sullivangroupe@aol.com

DRE Lic. 01883524

Sullivan Group Commercial Real Estate

6720 Folsom Blvd., Suite 208

Sacramento, CA 95819

Phone: 916-361-8500 Fax: 916-361-8900

www.sullivangroupe.com



2912 Auburn Blvd. Sacramento, CA 95821 For Lease or Sale



Jim Sullivan

Phone: 916-361-8500

Cell: 916-730-6200

sullivangroupe@aol.com

DRE Lic. 01883524

Sullivan Group Commercial Real Estate

6720 Folsom Blvd., Suite 208

Sacramento, CA 95819

Phone: 916-361-8500 Fax: 916-361-8900

www.sullivangroupe.com



2912 Auburn Blvd. Sacramento, CA 95821 For Lease or Sale



Jim Sullivan

Phone: 916-361-8500

Cell: 916-730-6200

sullivangroupe@aol.com

DRE Lic. 01883524

Sullivan Group Commercial Real Estate

6720 Folsom Blvd., Suite 208

Sacramento, CA 95819

Phone: 916-361-8500 Fax: 916-361-8900

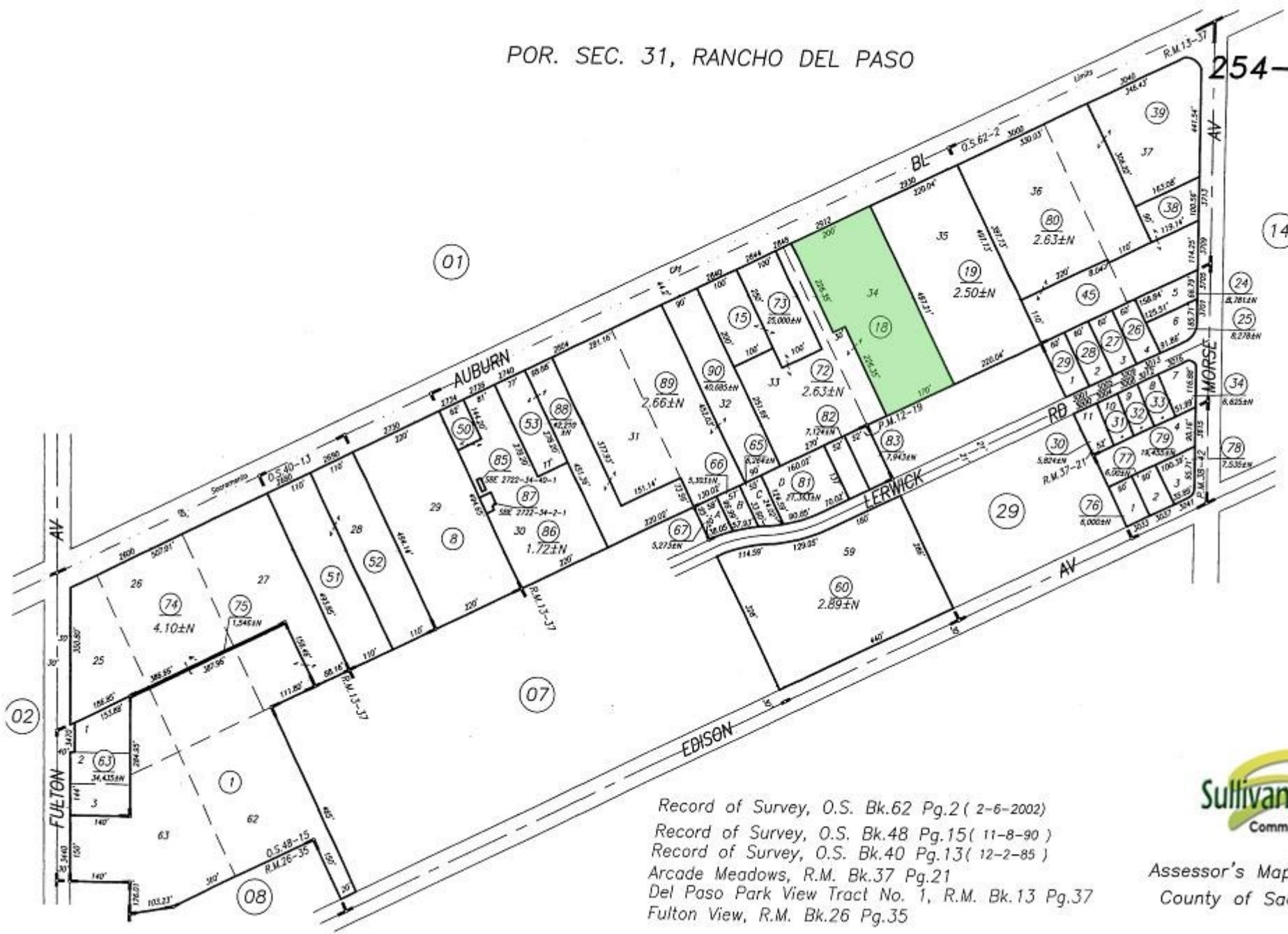
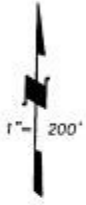
www.sullivangroupe.com



2912 Auburn Blvd. Sacramento, CA 95821 For Lease or Sale

POR. SEC. 31, RANCHO DEL PASO

254-06



Record of Survey, O.S. Bk.62 Pg.2 (2-6-2002)
 Record of Survey, O.S. Bk.48 Pg.15 (11-8-90)
 Record of Survey, O.S. Bk.40 Pg.13 (12-2-85)
 Arcade Meadows, R.M. Bk.37 Pg.21
 Del Paso Park View Tract No. 1, R.M. Bk.13 Pg.37
 Fulton View, R.M. Bk.26 Pg.35



Assessor's Map Bk. 254 Pg. 06
 County of Sacramento, Calif.